

32/401 Pacific Highway Artarmon NSW



Open plan, well presented, nice outlook to the east, with good natural light. Easy access to the Gore hill Freeway to the city and the M2 motorway to the west.

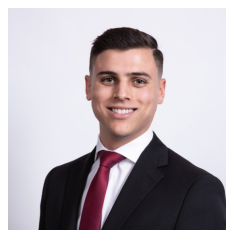
The suites includes:

- 30sqm approx.
- Air-conditioned
- Nice outlook
- Great natural light
- Communal kitchenette
- Communal toilets
- Secure parking

You do not want to miss this unmatched and affordable opportunity!

[For full version visit the website](https://www.silverco.com.au)

Type : Offices
Building Size : 30 sqm
View : <https://www.silverco.com.au/lease/nsw/north-shore-lower/artarmon/commercial/offices/8156909>



Mitchell Perry
02 9319 1666