

**3/110 Botany Road Alexandria NSW**



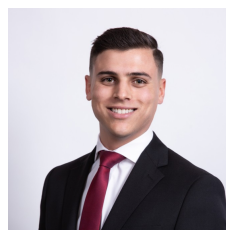
For lease is this functional open planned office space at an UNBEATABLE PRICE!  
Short term leases available.  
- Nil outgoing

Take advantage of the current office configuration or recreate the space that best suits your business. Situated in the vibrant heart of Alexandria this office space is the perfect first step to leading your business in the right direction.

- The suites includes:
- 1 x 24/7 private parking spot
  - 126sqm
  - Communal Lift

[For full version visit the website](https://www.silverco.com.au/lease/nsw/eastern-suburbs/alexandria/commercial/offices/7931775)

**Type** : Offices  
**Building Size** : 126 sqm  
**View** : <https://www.silverco.com.au/lease/nsw/eastern-suburbs/alexandria/commercial/offices/7931775>



**Mitchell Perry**  
02 9319 1666