



21 Milperra Road Revesby NSW

6 🚗

- Prime Industrial Building
- Excellent Exposure on Milperra Road
- Kerbside Showroom with High Clearance Factory at the Rear

Silver & Co Real Estate is pleased to present to the market For Lease 21 Milperra Road Revesby.

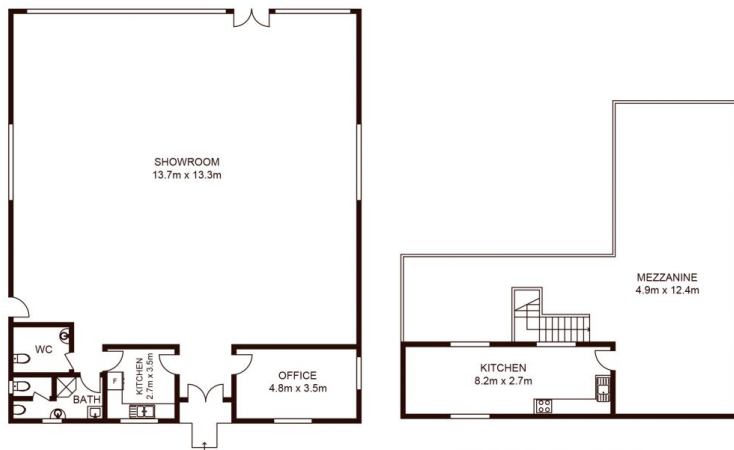
This property offers a rare opportunity to secure an excellent site just seconds away from the M5 Motorway & arterial roads.

The property itself offers a functional office/showroom at the front of the site with a floor to ceiling glass frontage facing Milperra Rd and a high clearance industrial factory with multiple roller doors at the rear.

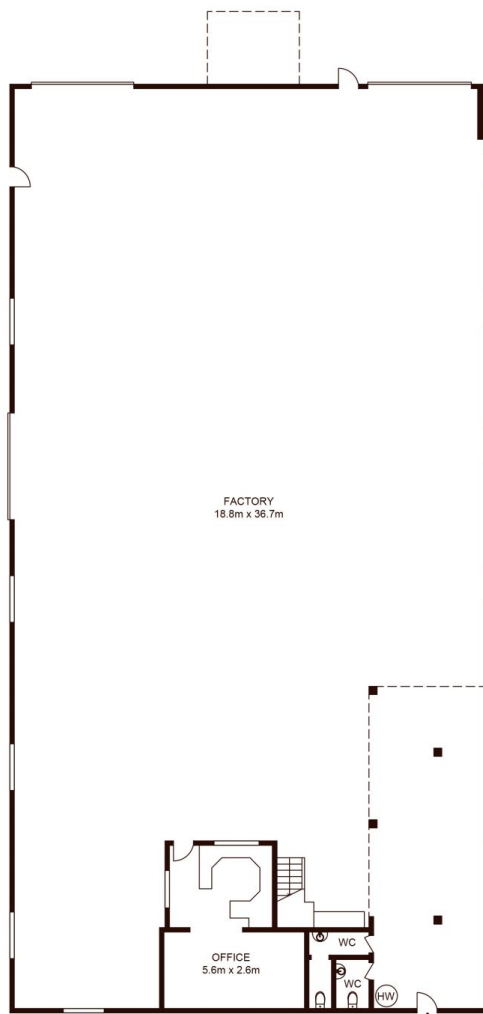
Building Size : 1010 sqm
Land Size : 1525 sqm
View : <https://www.silverco.com.au/lease/nsw/canterburybankstown/revesby/commercial/industrial/7722316>



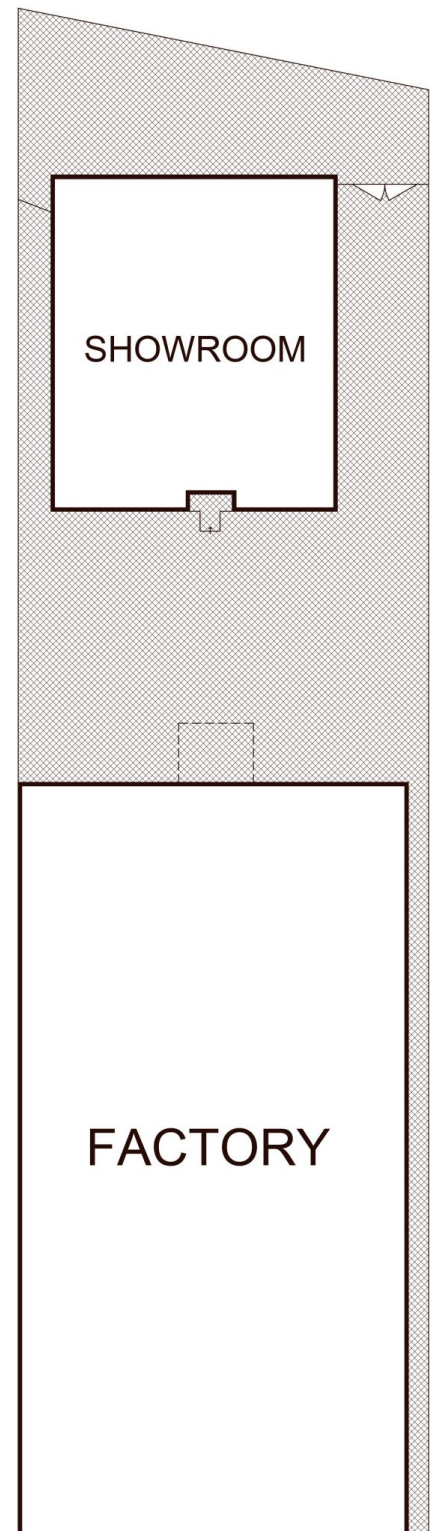
Mitchell Perry
02 9319 1666



FIRST FLOOR



GROUND FLOOR



SITE PLAN

21 Milperra Road, REVESBY

Not to scale • All measurements are approximate • Drawn for marketing purposes only • Floorplan by © Xorix Media

