

3/110 Botany Road Alexandria NSW

1 

PRICE NEGOTIABLE!

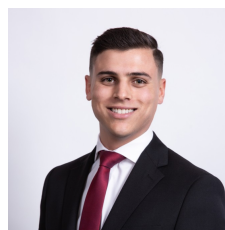
For lease is this functional open planned office space at an **UNBEATABLE PRICE**. Take advantage of the current office configuration or recreate the space that best suits your business. Situated in the vibrant heart of Alexandria this office space is the perfect first step to leading your business in the right direction.

The suites includes:

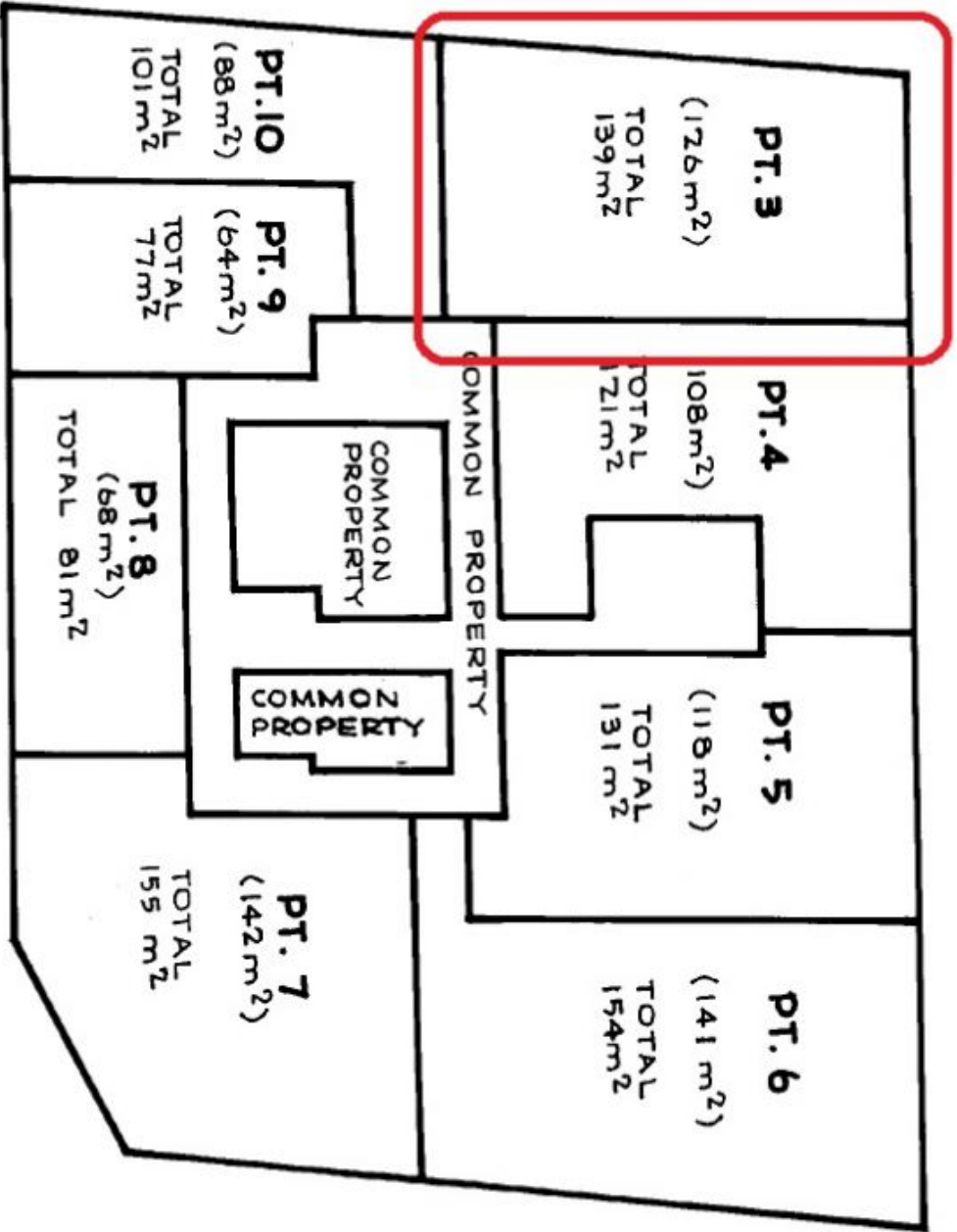
- A 24/7 private parking spot
- 126sqm
- Communal Lift
- Communal Kitchenette
- Communal bathrooms located on your level

[For full version visit the website](https://www.silverco.com.au/lease/nsw/eastern-suburbs/alexandria/commercial/offices/7710754)

Type : Offices
Building Size : 126 sqm
View : <https://www.silverco.com.au/lease/nsw/eastern-suburbs/alexandria/commercial/offices/7710754>



Mitchell Perry
02 9319 1666



FIRST FLOOR