

**1 Pemberton Street Botany NSW**

**2** 

- ? First time offered in over 35 years
- ? Total size approx. 250m<sup>2</sup>
- ? Zoned: B4 Mixed Use
- ? Close Port Botany & Sydney Airport

**Price** : Contact Agent  
**Building Size** : 250 sqm  
**Land Size** : 240 sqm  
**View** : <https://www.silverco.com.au/sale/nsw/eastern-suburbs/botany/commercial/industrial/7602190>

Silver & Co are excited to bring 1 Pemberton Street, Botany to market for sale.

Located on Pemberton Street, Botany is this rare freestanding warehouse facility surrounded by local and major businesses. Botany is located 4.5km south of Sydney Domestic Airport and 9km north of Port Botany.

Additional property features:

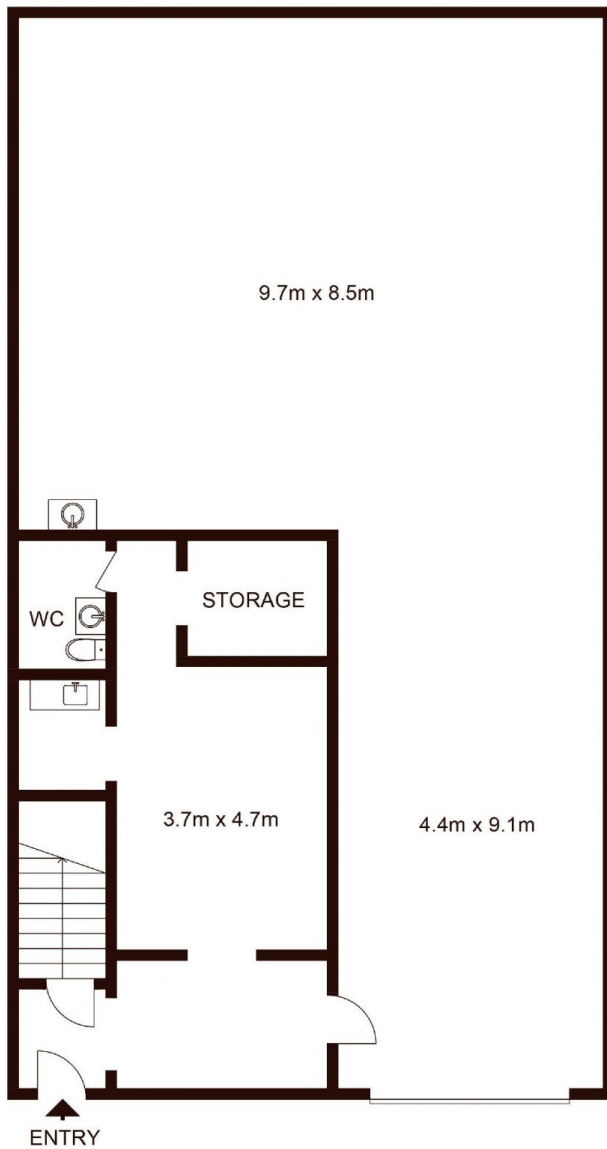
- Total site area of approx. 250m<sup>2</sup>
- approx. 180m<sup>2</sup> warehouse space
- approx. 70m<sup>2</sup> mezzanine office



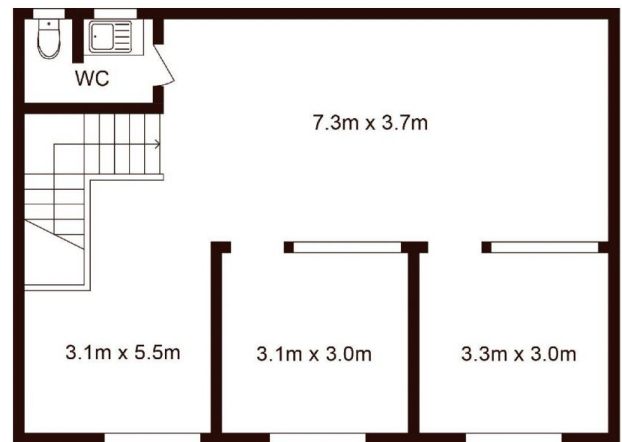
**Mitchell Perry**  
02 9319 1666



**Richard Perry**  
02 9319 1666



GROUND FLOOR



FIRST FLOOR

# 1 Pemberton Street, BOTANY

Not to scale • All measurements are approximate • Drawn for marketing purposes only • Floorplan by © Xorix Media

