



78 Parramatta Road Stanmore NSW

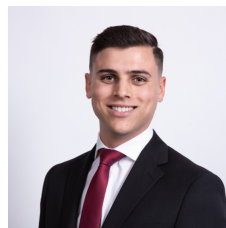


For lease is this prime kerbside building offering 318sqm of adaptable work space with secure parking. The site features split level spaces suitable for multi-purpose retail shop, warehouse, showroom or office. The property benefits from great street exposure to Parramatta Road and rear lane access for staff parking or loading/unloading truck deliveries.

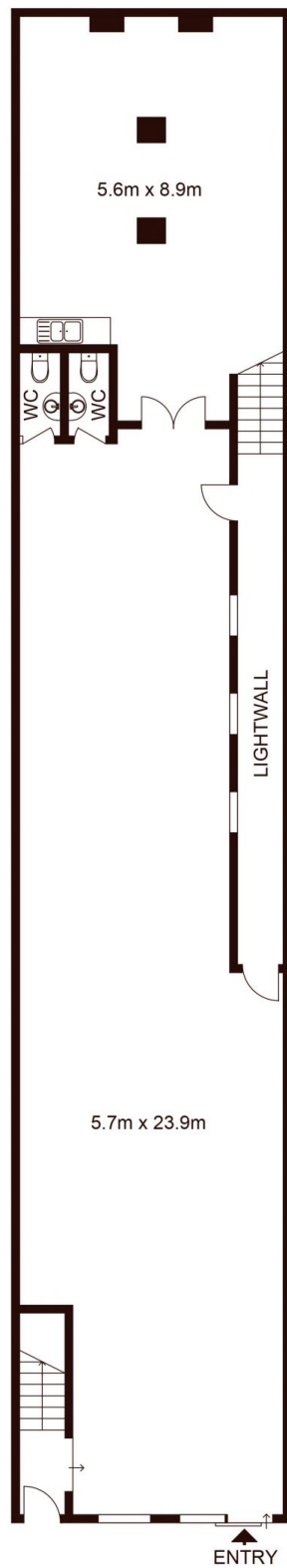
Property Features:

- Zoned B4 Mixed Use
- Suitable for General Business/ Retail Warehouse
- Entire Building for lease
- 318sqm across two floors
- Great street exposure
- Rear lane access
- Loading/unloading via rear lane
- Secure parking

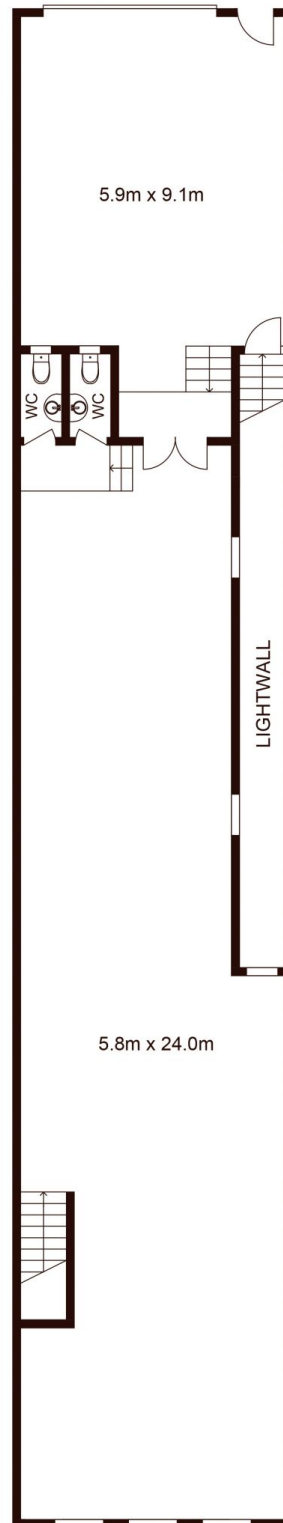
Building Size : 318 sqm
Land Size : 318 sqm
View : <https://www.silverco.com.au/lease/nsw/inner-west/stanmore/commercial/industrial/7514603>



Mitchell Perry
02 9319 1666



GROUND FLOOR



FIRST FLOOR

78 Parramatta Road, STANMORE

Not to scale • All measurements are approximate • Drawn for marketing purposes only • Floorplan by © Xorix Media

