

**303/233-235 Botany Road Waterloo NSW**

2  3  1 

Located in arguably one of the most sought-after areas in Sydney, this double level 2-bedroom apartment offers private court yard, modern fixtures and fittings along with a great position located just minutes from Green Square Station and local amenities. This is not one to be missed.

Additional attributes include:

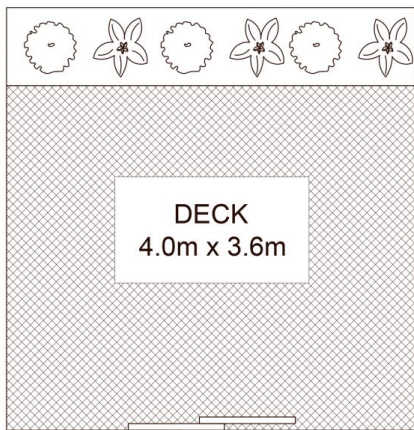
- Reverse-cycle air con
- Internal laundry
- Additional third toilet located on the ground floor
- Intercom security with lift access
- Spacious sunny courtyard
- Additional lock up storage cage
- Roof top outdoor entertaining area
- Top quality Smeg gas kitchen appliances

Don't miss out on this fantastic opportunity!

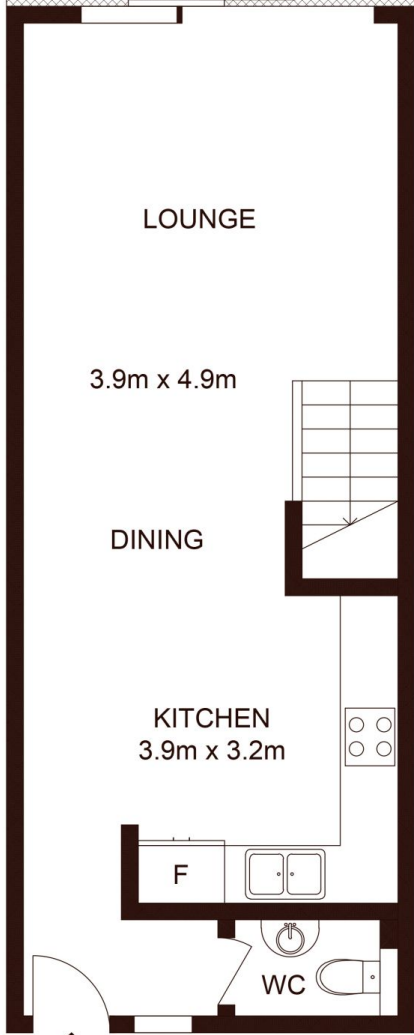
**Price** : \$ 910,000  
**Building Size** : 97 sqm  
**View** : <https://www.silverco.com.au/sale/nsw/ea-stern-suburbs/waterloo/residential/apartment/7439613>



**Mitchell Perry**  
02 9319 1666

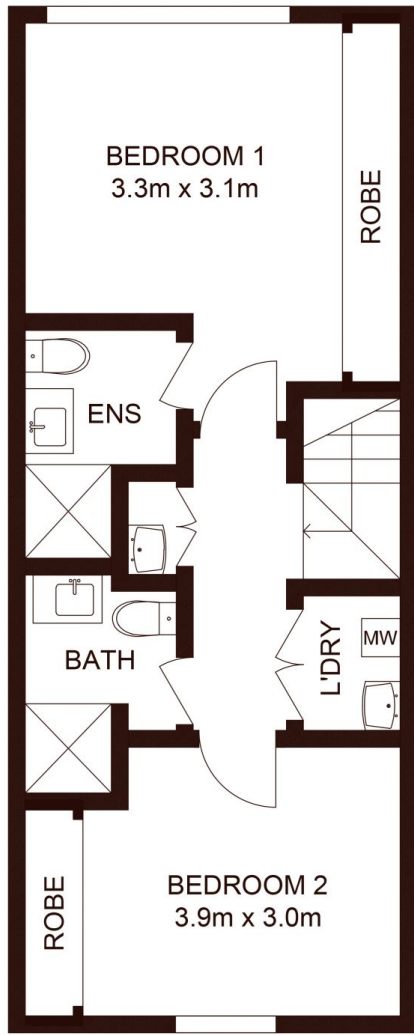


DECK  
4.0m x 3.6m



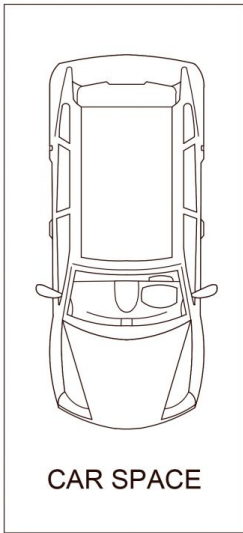
ENTRY

GROUND FLOOR



FFIRST FLOOR

STORAGE  
CAGE  
2.0m x 1.1m



303/233-235 Botany Road, WATERLOO

Not to scale • All measurements are approximate • Drawn for marketing purposes only • Floorplan by © Xorix Media

