

2/52-54 McEvoy Street Waterloo NSW

2

For lease is this prime kerbside shop offering 131sqm of adaptable work space with 2 secure car spaces. Conveniently located 500m North of Greensquare Station and within seconds to many cafes and restaurants. Previous use and currently set up a Physiotherapy Clinic with a reception area, private training room for pilates or weight training and open spaces for one on one treatments. Get in quick to secure this prime piece of real estate.

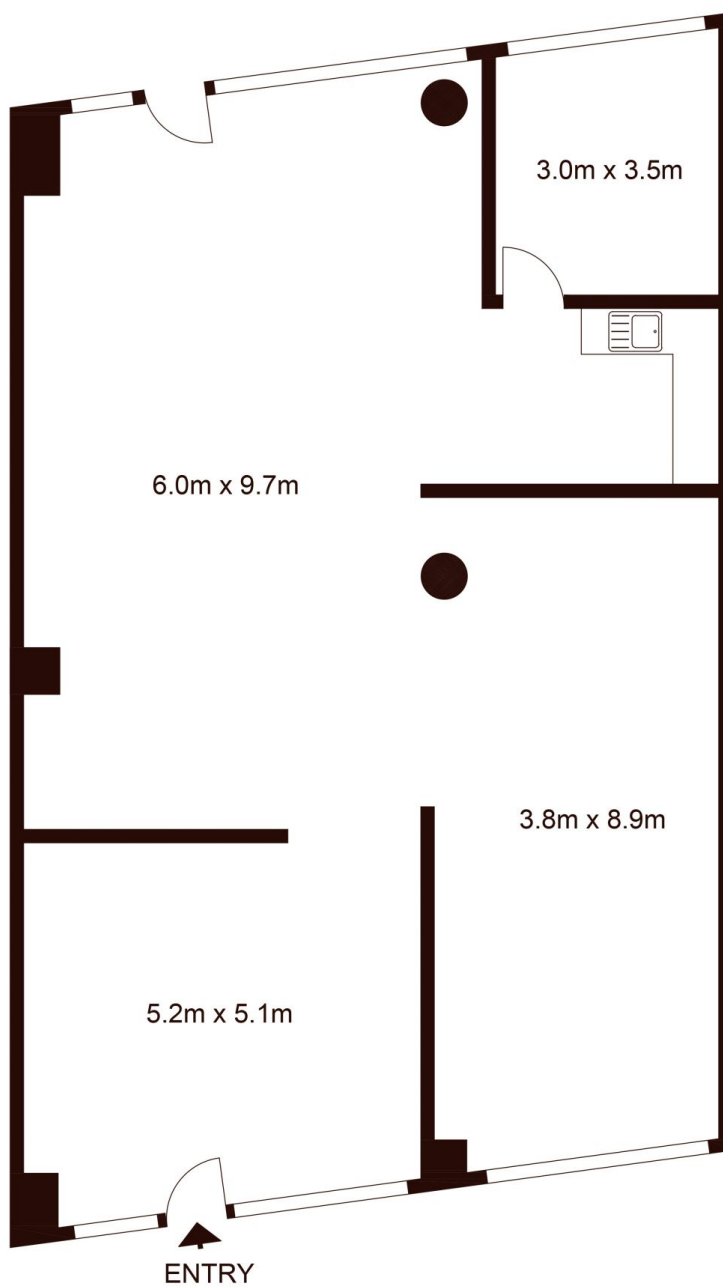
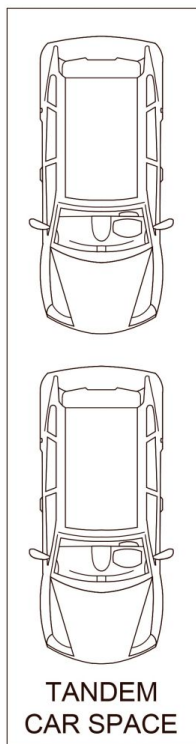
This ground floor space features:

- 131sqm of adaptable commercial space
- Glass shop front allowing for great business signage
- Communal lavatory facilities
- Galley style kitchenette
- Private office
- Physiotherapy Clinic fit out
- Split system A/C

Building Size : 131 sqm
View : <https://www.silverco.com.au/lease/nsw/eastern-suburbs/waterloo/commercial/retail/7420610>



Mitchell Perry
02 9319 1666



2/52-54 McEvoy Street, WATERLOO

Not to scale • All measurements are approximate • Drawn for marketing purposes only • Floorplan by © Xorix Media

