

**23/110-116 Bourke Road Alexandria NSW**

**2**

Unit 23 is located on the top level of the popular Bourke Rd Business Centre moments away from the Grounds of Alexandria, Greensquare Train Station & Sydney Airport. This unit comprises 210sqm of lettable space which includes reception area, meeting room, storage area, kitchen area and bathroom facilities. The first floor of unit 23 includes one partitioned office and 13 work stations. The fit out is of high quality and presents well.

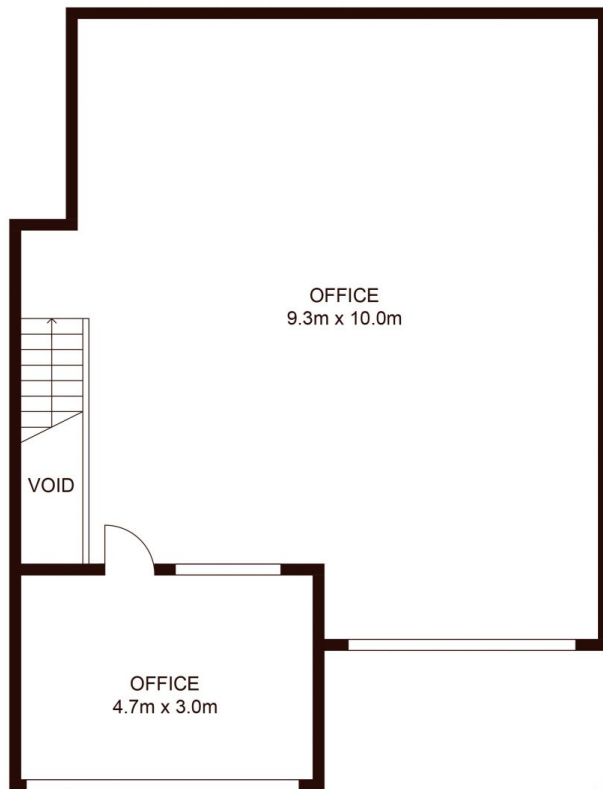
Additional features include:

- Dual level office and warehouse combination
- Total size 210m2
- Full height tilt-panel door
- 2 x dedicated car spaces
- 1 x bathroom
- Onsite visitor parking available
- Ducted air conditioning

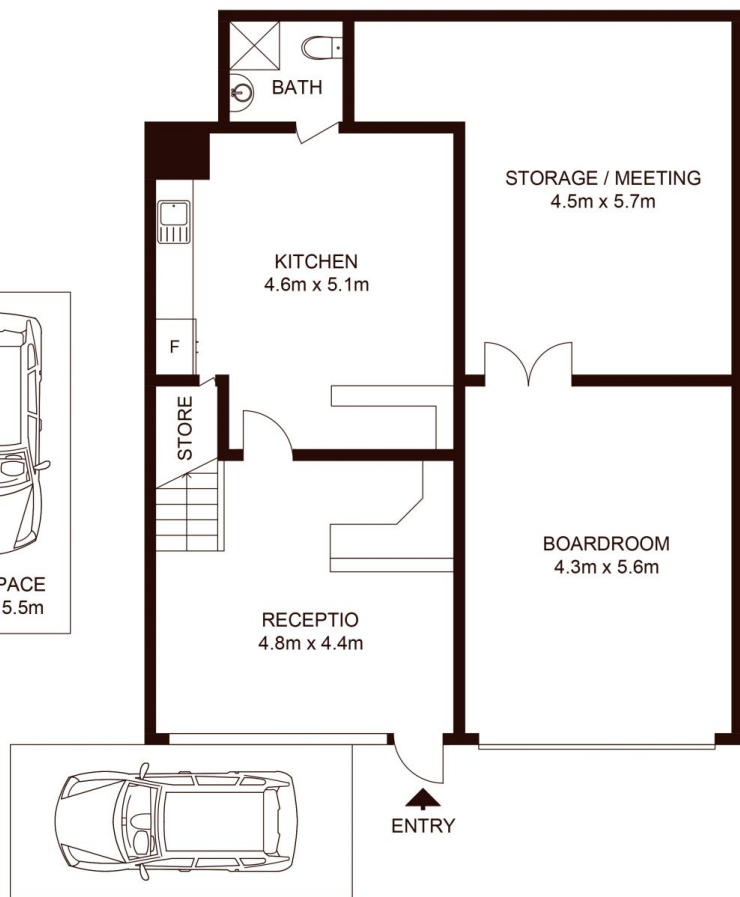
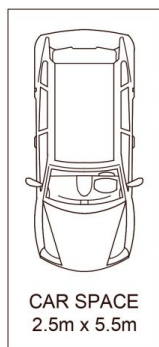
**Building Size** : 210 sqm  
**View** : <https://www.silverco.com.au/lease/nsw/eastern-suburbs/alexandria/commercial/offices/7418073>



**Mitchell Perry**  
**02 9319 1666**



## FIRST FLOOR



## GROUND FLOOR

23/110-116 Bourke Road, ALEXANDRIA

Not to scale • All measurements are approximate • Drawn for marketing purposes only • Floorplan by © Xorix Media

