



401/233-235 Botany Road WATERLOO NSW

1 1 1

Conveniently located within the vibrant hub of Waterloo. Within a short walk of popular Dank Street restaurants, cafes, East Village Shopping Centre and Green Square Town Centre/ Train station, offering quick and easy direct access to Sydney's CBD and the Airport. Luxurious finishes throughout include timber floorboards in the open plan living and dining area flowing onto a large balcony. Accommodation comprises of a large master bedroom with extensive built-in wardrobes plus a designer contemporary bathroom.

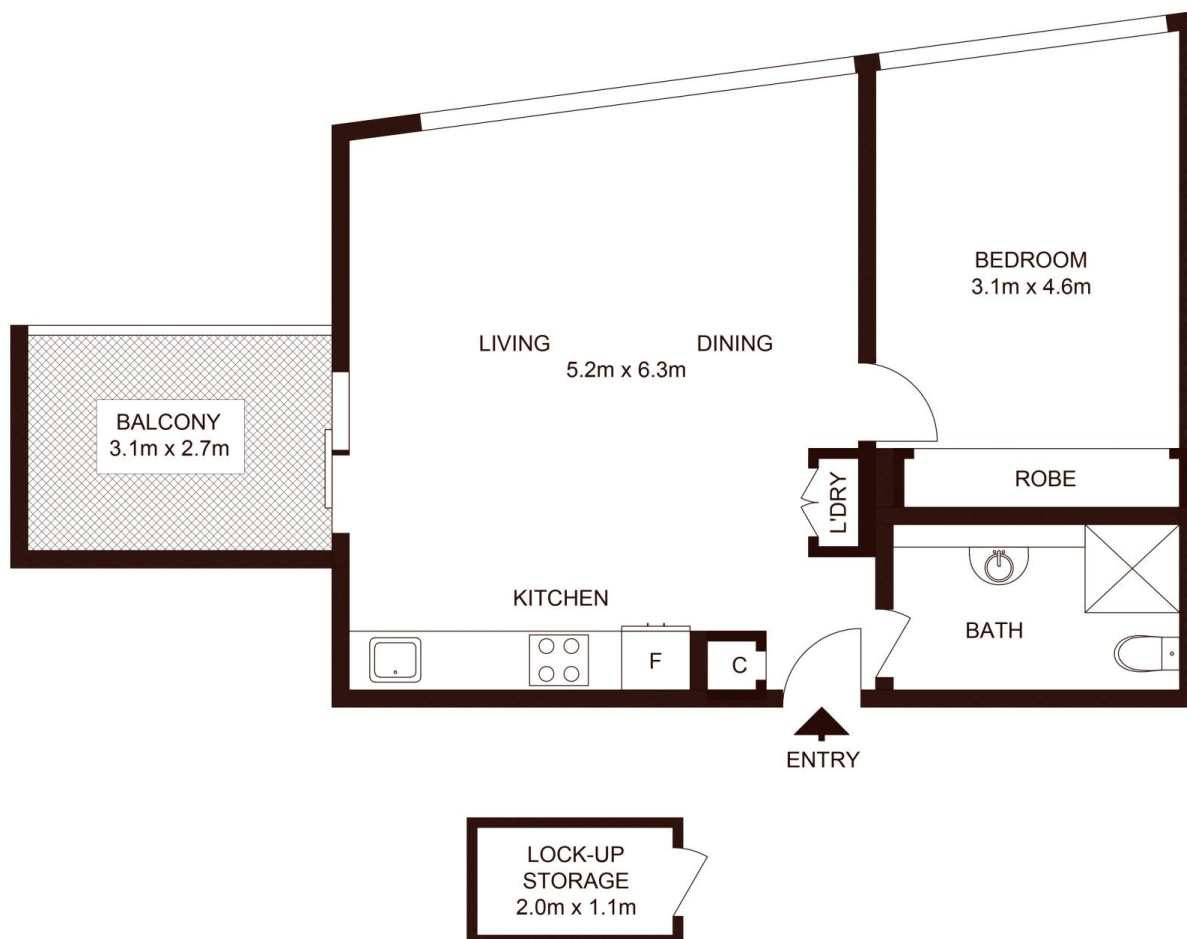
Additional attributes include:

- Reverse-cycle air con
- Internal laundry
- Intercom security with lift access
- Storage cage in basement
- Roof top outdoor entertaining area

Building Size : 6 sqm
View : <https://www.silverco.com.au/sale/nsw/eastern-suburbs/waterloo/residential/apartment/7384879>



Mitchell Perry
02 9319 1666



401/233-235 Botany Road, WATERLOO

Not to scale • All measurements are approximate • Drawn for marketing purposes only • Floorplan by © Xorix Media

