



49/37 Iredale Street NEWTOWN NSW

2 1 2

Delivering a touch of Manhattan to the vibrant inner west, this striking dual level loft apartment promises a lifestyle of ease, style and premier convenience. Enjoying a superb address, it rests in a quiet street ensconced within the quality surrounds of security 'Kings Row'. Refreshingly bright with a clever design it boasts a full width balcony which entices year-round alfresco enjoyment and captures sweeping vistas across the district.

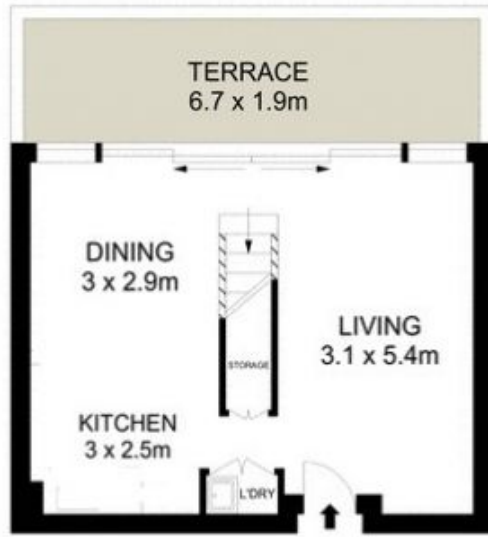
Live a spectacular urban lifestyle an easy 100m to King Street's wonderful selection of cafes, bars and transport options, a short stroll to the magnificence of Sydney Park as well as walking distance to the University of Sydney and University of Technology Sydney (UTS).

- Top floor, north east aspect, sweeping district views
- Striking timber floors, spacious living room
- Wall of glass opens to the full width alfresco balcony

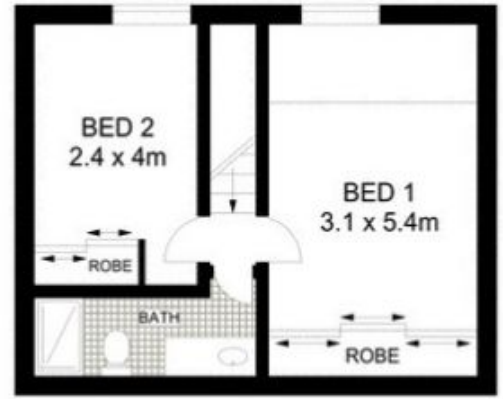
Building Size : 9 sqm
Land Size : 85 sqm
View : <https://www.silverco.com.au/sale/nsw/inner-west/newtown/residential/apartment/7384873>



BASEMENT



LEVEL TWO



UPPER LEVEL



Scale in metres. Indicative only. Dimensions are approximate. All information contained herein is gathered from sources we believe to be reliable. However we cannot guarantee its accuracy and interested persons should rely on their own enquiries.



49/37 Iredale St Newtown

